

ACCESSORIES

ACCESORIOS



AIR INLET DISC

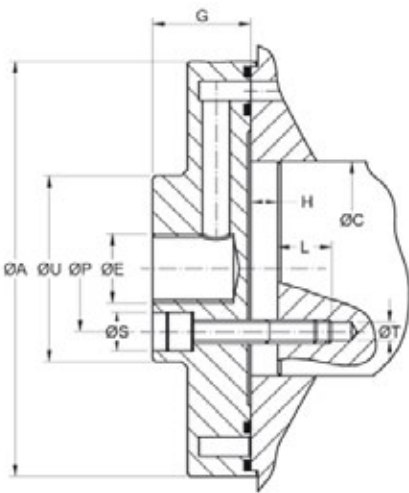
When the clutch-brake is mounted at the shaft end, it can be fed by a lateral air inlet.

In this way, the shaft is shorter and it eliminates the need to drill the shaft.

DISCO DE ALIMENTACIÓN LATERAL

En los casos en que el freno-embrague esté situado en el extremo del eje, puede ser alimentado por medio de un disco de alimentación lateral suministrado por GOIZPER y que va atado al eje por medio de 4 tornillos. De esta forma, el eje es más corto y se evita mecanizar los agujeros de alimentación de aire.

| SERIES | | 5.7 | | | | | | | | | | | | | | |
|--------------------|------|------------|--------|--------|------------|-------|-------|-------|------------|-------|------------|-------|------------|-------|------------|-------|
| SIZE | | 50 | 10-13 | 18 | 19N | 25N | 36 | 37N | 55 | 75 | 76 | 77 | 78 | 80 | 81 | 82 |
| Ø A | | 101 | 128 | 156 | 175 | 196 | 193 | 214 | 250 | 275 | 315 | 312 | 346 | 395 | 448 | 502 |
| Ø C | Min. | 44 | 50 | 60 | 45 | 45 | 68 | 70 | 70 | 90 | 100 | 125 | 125 | 140 | 150 | 170 |
| | Max. | 52 | 65 | 90 | 95 | 100 | 110 | 115 | 130 | 155 | 172 | 180 | 200 | 220 | 240 | 270 |
| Ø E | | M 22 x 1,5 | | | M 26 x 1,5 | | | | M 30 x 1,5 | | M 40 x 2,0 | | M 45 x 2,0 | | M 65 x 1,5 | |
| G | | 31 | 31 | 34 | 34 | 34 | 37,5 | 37,5 | 39,5 | 47 | 47 | 47 | 53 | 60 | 60 | 66 |
| H | | 1,5 | 2,5 | 3 | 3 | 3 | 3 | 3 | 3 | 3 | 3 | 3 | 3 | 3 | 3 | 3 |
| L | | 16 | 16 | 20 | 20 | 20 | 25 | 25 | 35 | 35 | 35 | 35 | 35 | 35 | 35 | 41 |
| Ø P | | 36 | 36 | 44 | 44 | 48 | 56 | 56 | 56 | 56 | 80 | 80 | 80 | 98 | 98 | 100 |
| Ø S | | 10,5 | 10,5 | 13,5 | 13,5 | 13,5 | 16,5 | 16,5 | 18,5 | 18,5 | 25 | 25 | 25 | 25 | 25 | 25 |
| Ø T - 4 x 90° | | M 6 | M 6 | M 8 | M 8 | M 8 | M 10 | M 10 | M 12 | M 12 | M 16 | M 16 | M 16 | M 16 | M 16 | M 16 |
| Ø U | | 52 | 52 | 65 | 65 | 70 | 80 | 80 | 80 | 112 | 112 | 112 | 112 | 132 | 132 | 135 |
| Weight kg. | | 1 | 1,8 | 2,5 | 3,75 | 4,8 | 4,8 | 6 | 9,13 | 13,55 | 17,2 | 15,4 | 22 | 29,4 | 58,3 | 57 |
| J kgm ² | | 0,0018 | 0,0044 | 0,0096 | 0,014 | 0,021 | 0,024 | 0,032 | 0,078 | 0,136 | 0,232 | 0,209 | 0,317 | 0,596 | 0,88 | 1,644 |

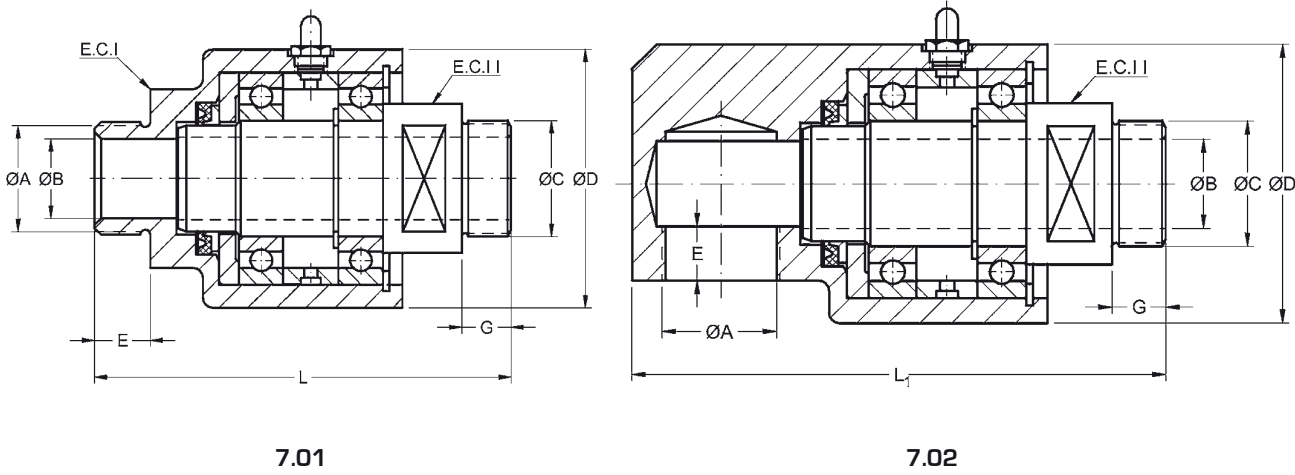


| SERIES | | 5.0 | | | | | | | | |
|--------------------|------|------------|--------|--------|------------|-------|------------|-------|-------|------------|
| SIZE | | 60 | 10 | 18 | 36 | 55 | 75 | 76 | 77 | 78 |
| Ø A | | 105 | 126 | 145 | 188 | 205 | 225 | 265 | 275 | 330 |
| Ø C | Min. | 44 | 44 | 55 | 68 | 70 | 70 | 75 | 100 | 115 |
| | Max. | 52 | 65 | 80 | 108 | 114 | 125 | 145 | 160 | 180 |
| Ø E | | M 22 x 1,5 | | | M 26 x 1,5 | | M 30 x 1,5 | | | M 45 x 2,0 |
| G | | 31 | 31 | 34 | 37,5 | 39,5 | 41 | 44 | 47 | 53 |
| H | | 1,5 | 2,5 | 3 | 3 | 3 | 3 | 3 | 3 | 3 |
| L | | 16 | 16 | 20 | 25 | 35 | 35 | 35 | 35 | 35 |
| Ø P | | 36 | 36 | 44 | 56 | 56 | 56 | 56 | 80 | 80 |
| Ø S | | 10,5 | 10,5 | 13,5 | 16,5 | 18,5 | 18,5 | 18,5 | 25 | 25 |
| Ø T - 4 x 90° | | M 6 | M 6 | M 8 | M 10 | M 12 | M 12 | M 12 | M 16 | M 16 |
| Ø U | | 52 | 52 | 65 | 80 | 80 | 80 | 80 | 112 | 112 |
| Weight kg. | | 1,1 | 1,8 | 2,3 | 4,6 | 5,5 | 6,6 | 11 | 12 | 19 |
| J kgm ² | | 0,0020 | 0,0040 | 0,0068 | 0,023 | 0,031 | 0,058 | 0,116 | 0,125 | 0,302 |

The lateral air feeding can be also used in the series 5.5 and 5.6

El disco de alimentación lateral también puede ser usado en las series 5.5 y 5.6.

AIR ROTARY INLET / RACORES GIRATORIOS



7.01

7.02

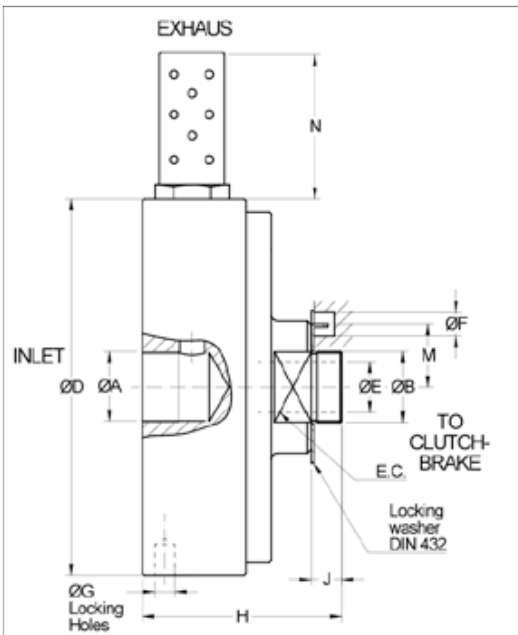
| SERIES | | 7.01 - 7.02 | | | | | |
|----------------|-----------------------|-------------|-------------|-------------------|------------|------------|------------|
| SIZE | | 00 | 02 | 12 | 03 | 04 | 06 |
| Ø A | | R 1/4" | R 1/2" | R 3/4" | R 1" | R 1 1/2" | R 2" |
| Ø B | | 7 | 13 | 18 | 25 | 38 | 48 |
| Ø C | | M 14 X 1,5 | M 22 X 1,5 | M 27 X 1,5 | M 35 X 1,5 | M 50 X 1,5 | M 65 X 1,5 |
| Ø D | | 46 | 62 | 70 | 80 | 100 | 125 |
| E | | 12 | 12 | 15 | 17 | 22 | 25 |
| G | | 13 | 12 | 15 | 15 | 22 | 25 |
| L | | 82 | 95 | 114 | 127 | 165 | 199 |
| L ₁ | | 95 | 111 | 133 | 149 | 198 | 240 |
| E.C.I | | 27 | 41 | 46 | 55 | 75 | 95 |
| E.C.II | | 17 | 24 | 28 | 32 | 50 | 65 |
| For Sizes | Series 5.0, 5.5 y 5.6 | - | 60-10 | 18-36 | 55-75-76 | 77-78 | 79-81 |
| | Series 5.7 | 05-11-16 | 23-50-10-13 | 18-19N-25N-36-37N | 55-75 | 76-77-78 | 80-81-82 |
| | Series 5.8 | - | 23-50-10 | 18 | 36-55-75 | 76-77-78 | 80 |

FOR DRAWINGS, SPECIFICATIONS AND QUESTIONS REGARDING A GOIZPER PRODUCT, PLEASE CONTACT US:
 Toll-Free: 1-800-813-0844 | Phone: 1-941-358-9447 | Fax: 1-941-358-9647 | Email: sales@goizperusa.com | www.goizperusa.com



Torque Technologies, the exclusive U.S. stocking agency of GOIZPER Clutches, Brakes and Clutch-Brakes provides expert, computerized application engineering and retrofit services to customers across the USA.

QUICK EXHAUST ACCESSORY / ACCESORIO DE ESCAPE RÁPIDO



| SERIES | 7.06 | | | | | |
|--------------------------|------------|------------|------------|------------|------------|----|
| SIZE | 02 | 12 | 03 | 04 | 06 | |
| Ø A | M 22 x 1,5 | M 27 x 1,5 | M 35 x 1,5 | M 50 x 1,5 | M 65 x 1,5 | |
| Ø B | M 22 x 1,5 | M 27 x 1,5 | M 35 x 1,5 | M 50 x 1,5 | M 65 x 1,5 | |
| Ø D | 123 | 160 | 185 | 230 | 250 | |
| Ø E | 13 | 18 | 25 | 36 | 48 | |
| Ø F | 8 | 9 | 12 | 14 | 19 | |
| Ø G | 10.25 | 10.25 | 10.25 | 12.25 | 12.25 | |
| H | 72 | 91 | 98 | 119 | 134 | |
| I | 12 | 15 | 15 | 22 | 25 | |
| K | 14 | 18 | 18 | 18 | 21 | |
| L | 7 | 9 | 10 | 14 | 14 | |
| M | 20 | 23 | 31 | 40 | 52 | |
| N | 45,5 | 47,5 | 47,5 | 45 | 41,5 | |
| E.C. | 32 | 41 | 55 | 75 | 95 | |
| Weight Kg | 1,7 | 3,8 | 5,5 | 9,6 | 15,7 | |
| Inertia Kgm ² | 0,0037 | 0,0154 | 0,0293 | 0,0738 | 0,214 | |
| For sizes | Series 5.0 | 60-10 | 18-36 | 55-75-76 | 77-78-79 | - |
| | Series 5.7 | 50-10 | 18-25-36 | 55-75 | 76-77-78 | 80 |
| | Series 5.8 | 23-50-10 | 18 | 36-55-75 | 76-77-78 | - |

ASSEMBLY EXAMPLES / EJEMPLOS DE MONTAJE

